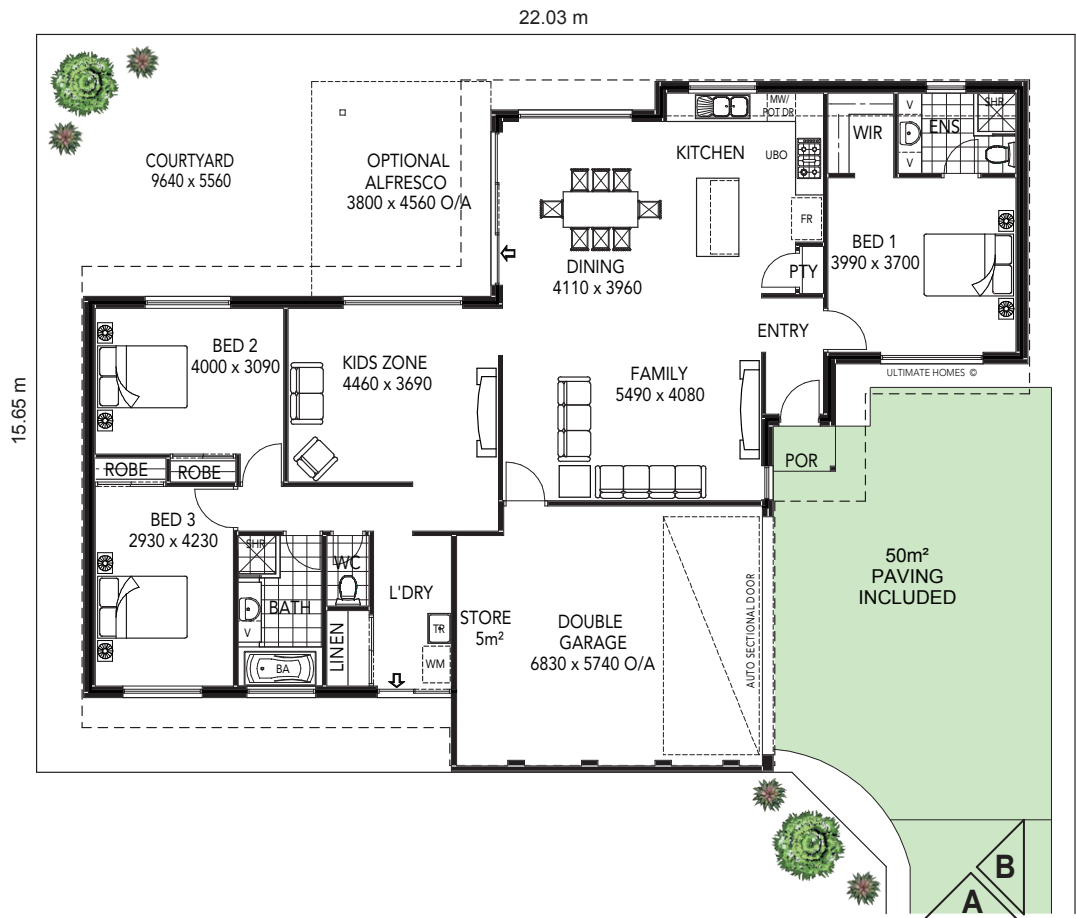


# THE AVOCA BAY



## AREA

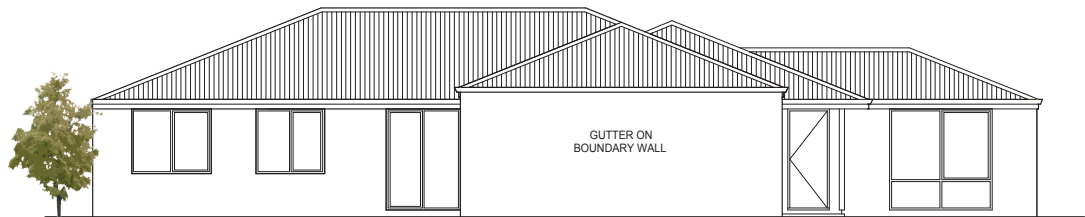
HOUSE : 157.10m<sup>2</sup>  
 GARAGE/STR: 37.38m<sup>2</sup>  
 PORCH : 1.27m<sup>2</sup>  
 TOTAL : 195.75m<sup>2</sup>  
 (inc/optional alfresco: 213.08m<sup>2</sup>)

## The Avoca Bay

DESIGNED FOR 22.03m WIDE  
 AND 15.65m DEEP BLOCK  
 SUBJECT TO SHIRE APPROVALS

For more  
 information contact:

**Ian Meyer**  
 0404 834 844  
 ianmeyer@iinet.net.au



ELEVATION A



ELEVATION B