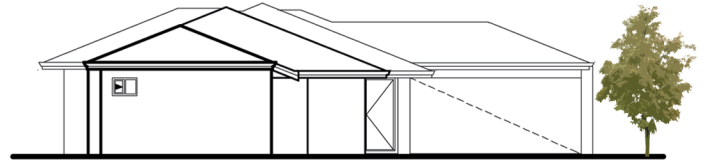


# TRIPLEX IN ROCKINGHAM

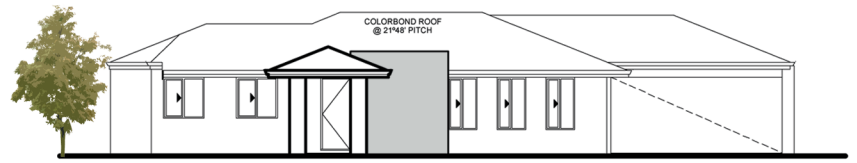
AREA	
HOUSE	: 102.06m <sup>2</sup>
GARAGE	: 33.27m <sup>2</sup>
STORE	: 4.59m <sup>2</sup>
PORCH	: 1.60m <sup>2</sup>
ALF'CO	: 6.48m <sup>2</sup>
<b>TOTAL</b>	<b>: 148.00m<sup>2</sup></b>
PERM	: 45.96m

AREA	
HOUSE	: 102.15m <sup>2</sup>
GARAGE	: 34.93m <sup>2</sup>
STORE	: 4.54m <sup>2</sup>
PORCH	: 1.73m <sup>2</sup>
ALF'CO	: 4.89m <sup>2</sup>
<b>TOTAL</b>	<b>: 148.24m<sup>2</sup></b>
PERM	: 47.26m

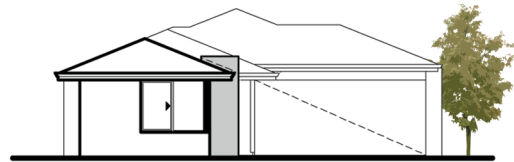
AREA	
HOUSE	: 104.10m <sup>2</sup>
GARAGE	: 33.84m <sup>2</sup>
STORE	: 3.61m <sup>2</sup>
PORCH	: 1.94m <sup>2</sup>
ALFRESCO	: 6.24m <sup>2</sup>
<b>TOTAL</b>	<b>: 149.73m<sup>2</sup></b>
PERM	: 61.44m



UNIT 3



UNIT 2



UNIT 1



ALL DESIGNS AND LAYOUTS  
SUBJECT TO COUNCIL APPROVAL

FOR MORE INFORMATION CONTACT:  
IAN MEYER  
0404 834 844  
ianmeyer@iinet.net.au