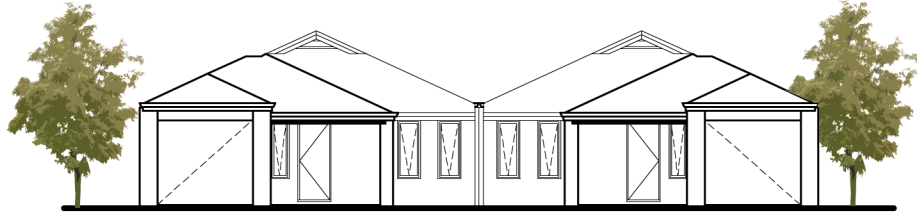
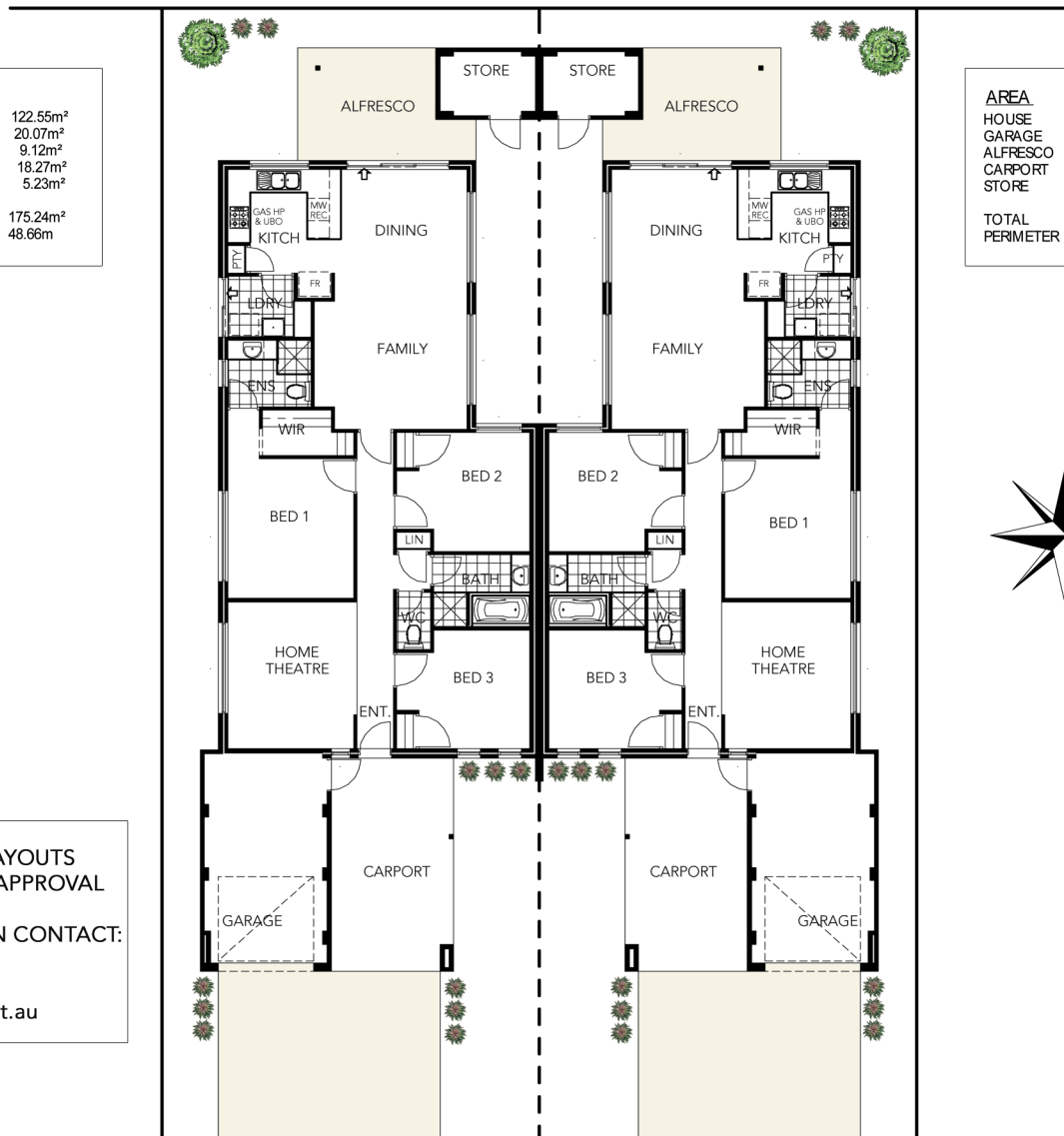


DUPLEX IN BANKSIA GROVE



AREA	
HOUSE	122.55m ²
GARAGE	20.07m ²
ALFRESCO	9.12m ²
CARPORT	18.27m ²
STORE	5.23m ²
TOTAL	175.24m²
PERIMETER	48.66m

AREA	
HOUSE	122.55m ²
GARAGE	20.07m ²
ALFRESCO	9.12m ²
CARPORT	18.27m ²
STORE	5.23m ²
TOTAL	175.24m²
PERIMETER	48.66m



ALL DESIGNS AND LAYOUTS
SUBJECT TO COUNCIL APPROVAL

FOR MORE INFORMATION CONTACT:
IAN MEYER
0404 834 844
ianmeyer@iinet.net.au