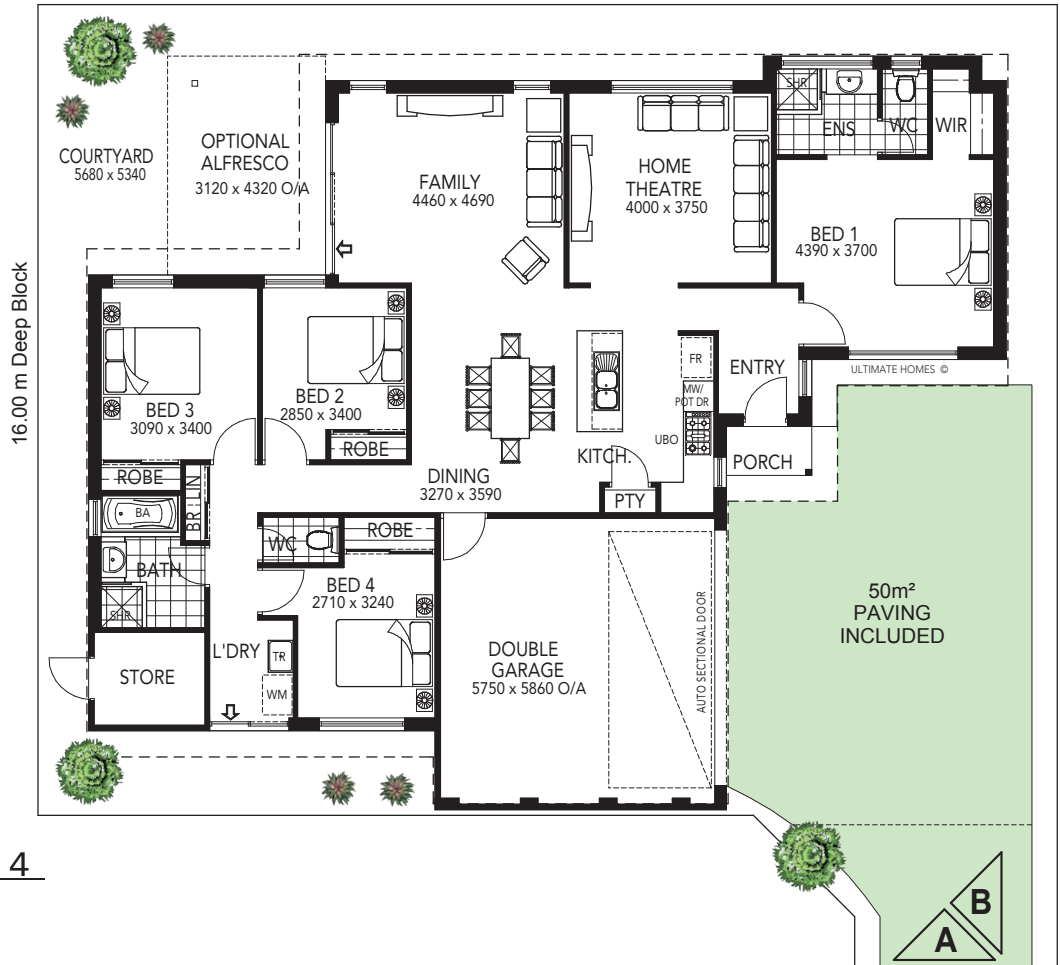


THE GEORDIE BAY 4

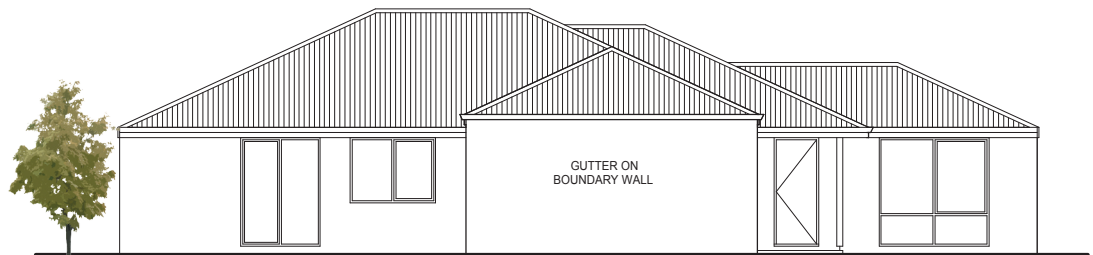
20.12 m Wide Block



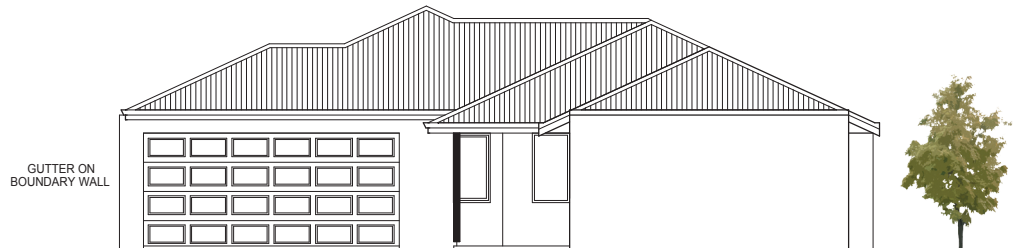
AREA	
HOUSE :	150.17m ²
GARAGE :	32.60m ²
PORCH :	1.61m ²
STORE :	4.46m ²
TOTAL :	188.84m ²
(inc/optional alfresco: 202.42m ²)	

The Geordie Bay 4

DESIGNED FOR 20.12m WIDE
AND 16.00m DEEP BLOCK
SUBJECT TO SHIRE APPROVALS



ELEVATION A



ELEVATION B

For more information contact:
Ian Meyer
0404 834 844
ianmeyer@iinet.net.au