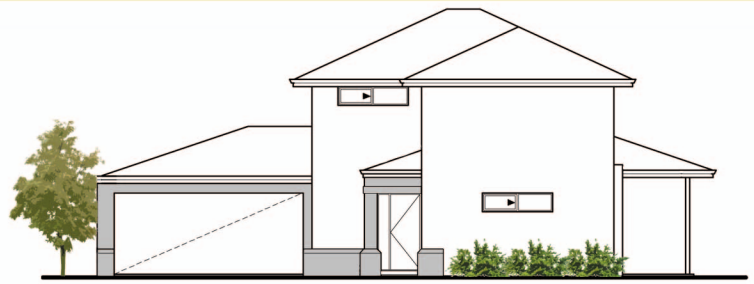
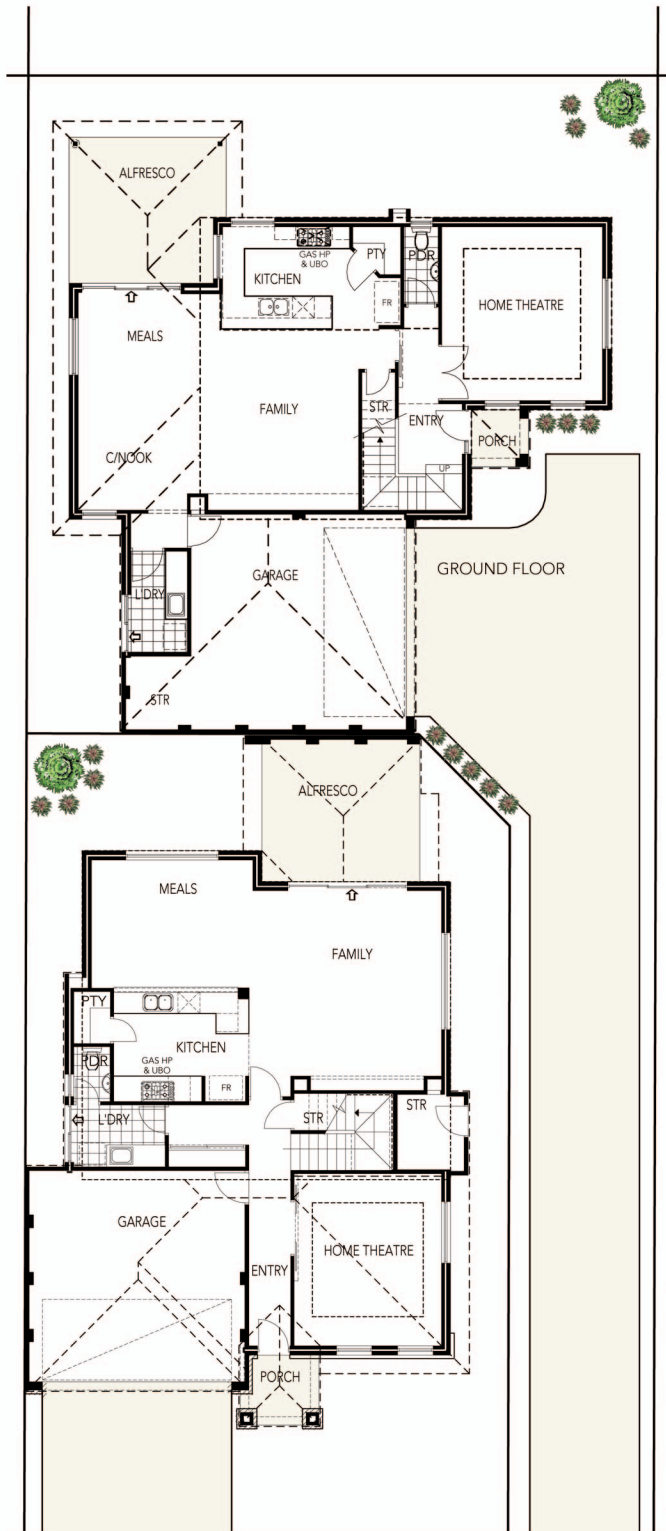
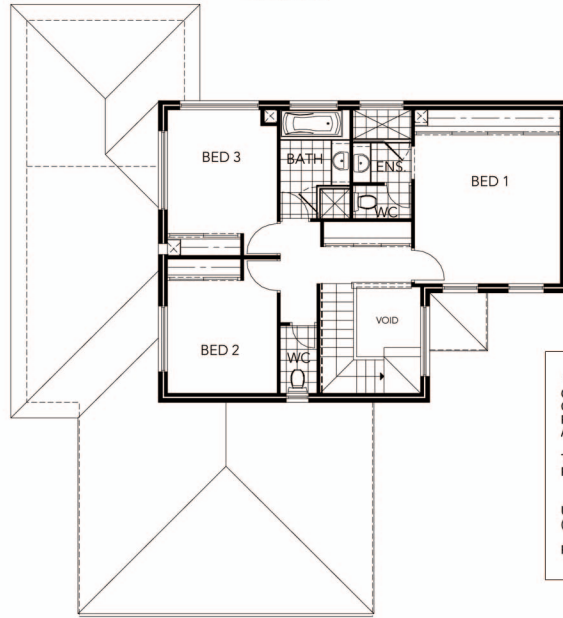


DUPLEX IN YOKINE



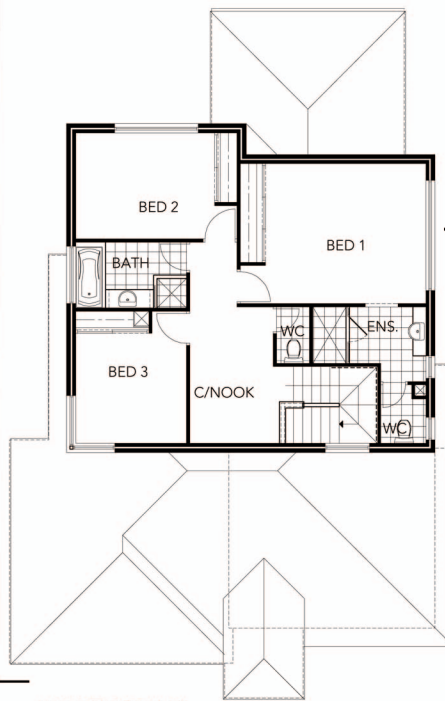
ELEVATION



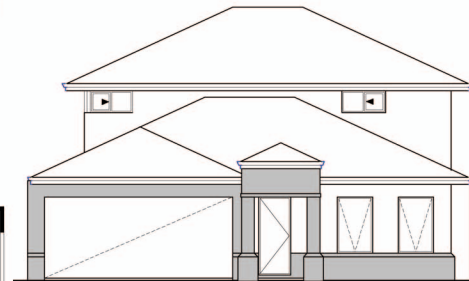
UPPER FLOOR PLAN



| AREA | |
|--|----------------------------|
| G-FLOOR | 110.66m ² |
| GARAGE | 40.88m ² |
| PORCH | 2.43m ² |
| ALFRESCO | 16.61m ² |
| TOTAL | 169.58m² |
| PERIM | 54.060m |
| UPPER FL. 81.68m ² (INCLUDING VOID & STAIRS) | |
| PERIM | 39.080m |



UPPER FLOOR PLAN



ELEVATION

| AREA | |
|--|----------------------------|
| G-FLOOR | 115.87m ² |
| GARAGE | 36.22m ² |
| PORCH | 3.91m ² |
| ALFRESCO | 17.24m ² |
| STORE | |
| TOTAL | 173.24m² |
| PERIM | 49.64m |
| UPPER FL. 86.19m ² (INCLUDING VOID & STAIRS) | |
| PERIM | 38.12m |

ALL DESIGNS AND LAYOUTS
SUBJECT TO COUNCIL APPROVAL

FOR MORE INFORMATION CONTACT:
IAN MEYER
0404 834 844
ianmeyer@inet.net.au